



Activity Guide



Get the
Blazes
OUTSIDE! (Please & Thank you!)

This Guide features spaces and places located throughout Colchester County. This Guide includes municipally owned, operated, and maintained spaces as well as Millbrook First Nation owned, operated, and maintained spaces (unless otherwise stated).

We would like to acknowledge that the land on which Colchester County is located is the traditional and unceded territory of the Mi'kmaq nation.



Table of Contents

Hiking & Walking	Page 4
Fat Biking & Mountain Biking	Page 11
Parks & Green Spaces	Page 14
Playgrounds	Page 21
Splashpads	Page 25
Skateparks	Page 25
Off Leash Dog Parks	Page 26
Fields & Courts	Page 28
Equipment Loan Program	Page 32
Other ways to Stay Active this Summer	Page 34



Hiking & Walking

Bible Hill Recreation Park – 64 Guest Drive, Bible Hill
Park with a walking path, large sets of playground equipment as well as a natural playground.

Cobequid Trail – Multiple Trailheads

Old Barns trailhead (919 Shore Road, Old Barns), Cobequid Bay Lookoff trailhead (3471 Highway 236, Lower Truro), Lower Truro trailhead (4057 Highway 236, Lower Truro), Fundy Discovery Site trailhead (103 Tidal Bore Road, Lower Truro), Truro trailhead (202 Willow Street, Truro), Eagle Crest trailhead (39 Warren Drive, Bible Hill), Farnham Brook trailhead (36 Village Court, Bible Hill), Bible Hill Recreation Park trailhead (64 Guest Drive, Bible Hill).

18km trail network in central Colchester County.

Open year round.

Walking and cycling are permitted.

Motorized vehicles are prohibited.

Dogs on leash are permitted. Please pick up after your dog.



Welcome to our smoke free spaces

Caldwell Roach Kings Mutual Insurance
Ice Surface Rules:

PLAY SMART, PLAY SAFE!

to prevent the spread of COVID-19

Stay 6 feet apart and avoid large crowds.



Wash or sanitize your hands frequently.



Stay home if you feel sick.



Wear a mask.



Register before skating.



Please follow all Public Health Directives

Dennis Park – 54 Main Street West, Stewiacke

Offers many things such as a walking track, natural playground and outdoor fitness equipment.

The walking track is a 600m loop going around the outside of the park, giving one the perfect view of the entire park.

Park includes two gazebos, multiple picnic tables and benches to relax and enjoy the park.

Five Islands Lighthouse Park – 140 Broderick Lane, Five Islands

1km walking path meanders through this 22 – acre costal park.

Lighthouse ship playground and picnic shelter.

Sit awhile on one of the benches and enjoy the amazing, panoramic view of the Minas Basin.

Washrooms available.

John B. Trail - Millbrook

Access to trailhead: turn left at 945 Willow Street. Trailhead is 250m up the road.

2km crushed stone and gravel loop which begins at the end of the Woodchip Trail.

Originally a logging road established by Community members, who are now stewards of the trail and work with the Millbrook Band Council to preserve/ maintain the trail.

Walking and cycling are permitted on the trail.

John Crawford Trail – 185 Kitchener Street, Stewiacke

First section of the trail is a 350m crusher dust loop from the parking lot and back, with many dedicated benches along the way.

The second section of the trail is more of a nature trail focus. This section takes one through the back woods and through a wetland. This section of the trail also loops back and is a total of 1.6kms.

Total of two sections being 1.9kms.

Kiwanis Park – 39 Juniper Street, Truro

Walking Track around Kiwanis Park Pond.

1 lap around the pond is equal to 0.6km.

Millbrook Powwow Grounds Walking Track – 943 Willow Street, Truro

The Powwow grounds hosts a traditional arbor situated in the middle which is surrounded by a 400m gravel and crusher dust walking track.

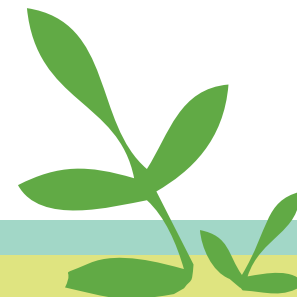
Walking, cycling and wheeling are permitted on the track.

Nelson Memorial Park Trails – 153 Loop of Highway 6, Bayhead

Explore the walking trails in the park or the Butter Trail (rail trail), part of the Great Trail.

This 47-acre park is set in a quiet, natural setting beside Tatamagouche Bay on the Northumberland Shore.

Picnic shelters, playground and ocean view.



River Country Trail – 71 Highway 2, Stewiacke

First phase of the trail is 1.4kms which connects Mastodon Ridge to the Stewiacke Ballfields and offers stunning views of the Stewiacke River.

Phase two of this scenic trail includes an added loop surrounding the ballfields as well as a loop back to Mastodon Ridge.

Both phases make a 2.5km trail.

Stan “Chook” Maxwell Memorial Park – 264 Prince Street, Truro

Walking path throughout the parks greenspace.

1 lap equals 0.3km.

Park is open from 1:30pm to Dusk daily.

Stewiacke River Park Trail – 528 Stewiacke River Park Road, East Stewiacke

2km trail is mostly flat along the river and through the forest.

Benches are located along the trail.

Picnic shelters and playground.

Washrooms open year-round.

T.A.A.C. Grounds – 75 Golf Street, Truro

0.4km (quarter-mile), 5 lane walking track.

Includes Jamie Sheppard Memorial Playground.

The Great Trail

As the longest recreational trail in the world, the Great Trail (Trans Canada Trail) connects Canada from coast to coast to coast.

The Great Trail in Colchester County follows scenic, rural roads and some of our best trails – the Butter Trail and Short Line Trail along the Northumberland Shore, the Gully Lake wilderness hiking trails, and the Cobequid Trail near Truro.

Valley Nature Trail – 96 Salmon River Road, 30 Thrush Lane (No Parking), 34 Robin Road (No Parking)

700-m crushed gravel trail located on municipal parkland behind Valley Elementary School.

It is a loop trail through the forest, with connections to nearby residential streets.

Victoria Park – 29 Park Road, Truro

75kms of trails in the upper and lower park.

For trail maps please visit www.truro.ca.

Dogs on leash are permitted. Please pick up after your dog.

Expect and respect all other trail users.

Washrooms available.



Wood Chip Trail - Millbrook

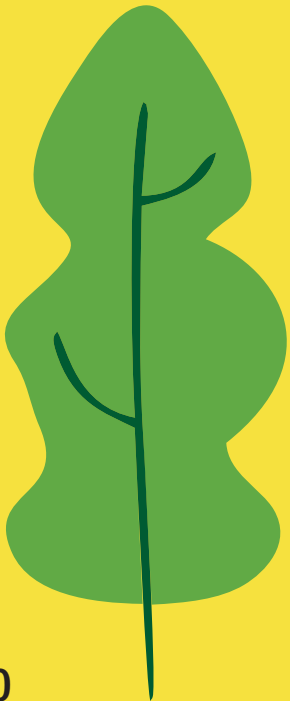
Two Entry Points: End of Church Road and turning left at 945 Willow Street. Trailhead is 250m up the road.

Trailhead is adjacent to John B. Trail.

700m multi-surface trail through a forested area of spruce, hemlock and fir that allows one to see many different wildlife species along the way.

Walking is permitted on this trail.

This trail is managed and maintained by Millbrook First Nation Band Office with assistance from the Mi'kmaw Conservation Group.



Fat Biking Mountain & Biking

Cobequid Trail - Multiple Trailheads

Old Barns trailhead (919 Shore Road, Old Barns), Cobequid Bay Lookoff trailhead (3471 Highway 236, Lower Truro), Lower Truro trailhead (4057 Highway 236, Lower Truro), Fundy Discovery Site trailhead (103 Tidal Bore Road, Lower Truro), Truro trailhead (202 Willow Street, Truro), Eagle Crest trailhead (39 Warren Drive, Bible Hill), Farnham Brook trailhead (36 Village Court, Bible Hill), Bible Hill Recreation Park trailhead (64 Guest Drive, Bible Hill).

18km walking and bicycling trail network in central Colchester County.

Open year round.

Walking and cycling are permitted.

Motorized vehicles are prohibited.

Dogs on leash are permitted. Please pick up after your dog.



Nelson Memorial Park – 153 Loop of Highway 6, Bayhead

Explore the Butter Trail (rail trail), part of the Great Trail.

47-acre park in a quiet, natural setting beside Tatamagouche Bay on the Northumberland Shore.

Picnic Shelters, playground and Ocean View.

Washrooms available.

Pat Mahaney Bike Trails – 39 Warren Drive, Bible Hill

2.6km trail in a wooded area with loops for three skill levels (beginner, intermediate, and advanced).

Railyard Mountain Bike Park – 627 Young Street, Truro

Over 40kms of trail.

51 trails for all skill and ability levels.

Green, Blue and Black trails based on level of difficulty.

Expect and respect all other trail users.

Stewiacke River Park Trail – 528 Stewiacke River Park Road, East Stewiacke

2km trail along the river through the forest.

Benches are located along the way.

Picnic shelters and playground.

Washrooms open year-round.

The Great Trail

As the longest recreational trail in the world, the Great Trail (Trans Canada Trail) connects Canada from coast to coast to coast.

The Great Trail in Colchester County follows scenic, rural roads and some of our best trails – the Butter Trail and Short Line Trail along the Northumberland Shore, the Gully Lake wilderness hiking trails, and the Cobequid Trail near Truro.

Valley Nature Trail – 96 Salmon River Road, 30 Thrush Lane (No Parking), 34 Robin Road (No Parking)

700m crushed gravel trail located on municipal parkland behind Valley Elementary School. It is a loop trail through the forest, with connections to nearby residential streets.



Parks & Green Spaces



Armstrong Park – 65 Armstrong Drive, Bible Hill

Park / greenspace in a residential neighbourhood.

Bible Hill Recreation Park – 64 Guest Drive, Bible Hill

Park with a large greenspace, playground equipment, natural playground, sports fields and walking trail.

Birch Street Park – 75 Birch Street, Salmon River

Swings and a play structure in a residential neighbourhood.

Civic Square – 740 Prince Street, Truro

A large, flexible open greenspace in the centre of Downtown Truro.

Equipped with seating to enjoy our beautiful downtown.

Includes outdoor musical instruments.

Clover Drive Park – 27 Clover Drive, Bible Hill

Park / greenspace in a residential neighbourhood.

Dennis Park – 54 Main Street, West Stewiacke

Offers many things such as a walking track, natural playground, and outdoor fitness equipment.

The walking track is a 600m loop going around the outside of the park, giving one the perfect view of the entire park.

Park includes two gazebos, multiple picnic tables and benches to relax and enjoy the park.

Farnham Road Park – 244 Vimy Road, Bible Hill

Park / greenspace in a residential neighbourhood.

Fielding Avenue Park – 22 Fielding Avenue, Bible Hill

Park / greenspace in a residential neighbourhood.



Five Island Lighthouse Park – 140 Broderick Lane, Five Islands

1km walking path meanders through this 22 – acre costal park.

Lighthouse, ship playground and picnic shelter.

Sit a while on one of the benches and enjoy the amazing, panoramic view of the Minas Basin.

Washrooms available.

Fundy Discovery Site – 103 Tidal Bore Road, Lower Truro

A park overlooking the Salmon River where you can observe the Tidal Bore twice daily at predicted times.

A one-of-a-kind natural playground with a Bay of Fundy theme.

Washrooms available.

Visitor information Centre on site.

Herb Peppard Park – 24 Alice Street, Truro

Appealing fenced park in the East End of Truro including a greenspace with a children's playground, a gazebo, and multiple benches.

Hilden Recreation Park – 29 William Russell Road, Hilden

Swings, a play structure and an open greenspace in a residential neighbourhood.

Hillcrest Avenue Park – 177 Hillcrest Avenue, Bible Hill

Park / greenspace in a residential neighbourhood.

Holy Well Park – 66 Main Street, Bible Hill

Park / greenspace in a residential neighbourhood.

John Crawford Trail – 185 Kitchener Street, Stewiacke

First section of the trail is a 350m crusher dust loop from the parking lot and back, with many dedicated benches along the way.

The second section of the trail is more of a nature trail focus. This section takes one through the back woods and through a wetland. This section of the trail also loops back and is a total of 1.6kms.

Total of two sections being 1.9kms.

Kiwanis Park – 39 Juniper Street, Truro

Inviting park which hosts a relaxing space to watch wildlife in and around the pond.

Includes a walking path around the pond. 1 lap around the pond is equal to 0.6km.

Millbrook Powwow Grounds – 943 Willow Street, Truro

The Powwow grounds hosts a traditional arbor situated in the middle which is surrounded by a 400m walking track.

Mount Pleasant Boulevard Greenspace – 214 Glenwood Drive, Truro

Large greenspace bordering Mount Pleasant Blvd. and Glenwood Dr.

Murdock Drive Park – 42 Murdock Drive, Bible Hill

Park / greenspace in a residential neighbourhood.



Nancy Avenue Park – 6 Nancy Avenue, Salmon River

Swings and a large, open greenspace in a residential neighbourhood.

No parking.

Nelson Memorial Park – 153 Loop of Highway 6, Bayhead

47 – acre park in a quiet, natural setting beside Tatamagouche Bay on the Northumberland Shore.

Walk along the paths through the woods or along the gravel beach and watch for wildlife.

Explore the Butter Trail (Rail Trail), part of The Great Trail.

Picnic Shelters, playground and ocean view.

Washrooms available.

Oakland Park – 96 Oakland Drive, Lower Onslow

Swings, a play structure and a greenspace in a residential neighbourhood.

Pleasant Street Playground – 449 Pleasant Street, Truro

Located beside the water tower on Pleasant Street including a greenspace and children's playground.

Poplar Drive Park – 19 Poplar Drive, Bible Hill

Park / greenspace in a residential neighbourhood.

River Country Trail – 71 Highway 2, Stewiacke

First phase of the trail is 1.4kms which connects Mastodon Ridge to the Stewiacke Ballfields and offers stunning views of the Stewiacke River.

Phase two of this scenic trail includes an added loop surrounding the ballfields as well as a loop back to Mastodon Ridge.

Both phases make a 2.5km trail.

Small playground located near trailhead.

Riverfront Park – 10 Bayview Street, Truro

Situated along the Salmon River beside the bridge linking Truro to Bible Hill.

Attractive park with lights, a gazebo, picnic tables and a green space.

Rocky Ridge Park – 20 Urquhart Drive, Truro Heights

An open space with a basketball court.

Limited parking available.

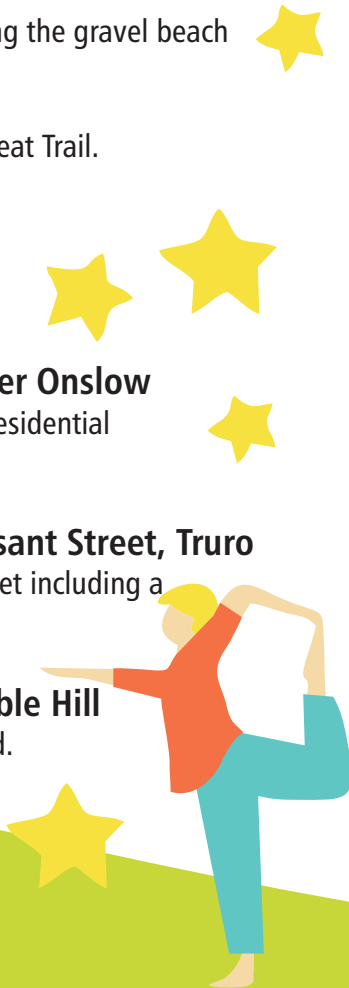
Scenic Drive Park – 23 Maple Boulevard, Bible Hill

Park / greenspace in a residential neighbourhood.

Stan "Chook" Maxwell Memorial Park – 264 Prince Street, Truro

Beautiful park / greenspace and children's playground which encourages recreation and the enjoyment of the outdoors.

Park is open from 1:30pm to Dusk daily.



Stewiacke River Park – 528 Stewiacke River Park Road, East Stewiacke

Enjoy this 66 – acre, natural forested park with mature pine, hemlock and spruce trees.

Walk 2kms of trail along the river and through the forest.

Benches are located along the trail.

Picnic shelters and playground.

Washrooms open year-round.

T.A.A.C. Grounds – 75 Golf Street, Truro

Large Green space including a 0.4km (quarter-mile), five-lane running and walking track; field event facilities; football field, senior baseball field and Jamie Sheppard Memorial Playground.

Teakwood Drive Park – 27 Teakwood Drive, Bible Hill

Park / greenspace in a residential neighbourhood.

Victoria Park – 29 Park Road, Truro

3000-acre park in Downtown Truro, rich with history, and breathtaking scenic forestry.

Many trails for all abilities.

For trail maps please visit www.truro.ca.

Dogs on leash are permitted. Please pick up after your dog.

Washrooms available.



Village Court Park – 36 Village Court, Bible Hill

Park / greenspace in a residential neighbourhood.

Playgrounds

Anita Crescent Playground – 57 Anita Crescent, Truro Heights

A play structure and swings in a residential neighbourhood.

Bible Hill Recreation Park – 64 Guest Drive, Bible Hill

Park with large sets of playground equipment including natural playground equipment.

Birch Street Park – 75 Birch Street, Salmon River

Swings and a play structure in a residential neighbourhood.

Debert Playground – 80 Dieppe Avenue, Debert

A shaded playground with swings and a play structure in a residential neighbourhood.

Large sports field on site.

Dennis Park Playground – 54 Main Street, West Stewiacke

Offers many things such as a natural playground, walking track, and outdoor fitness equipment.

Park also includes two gazebos, multiple picnic tables and benches to relax and enjoy the park.

Five Island Lighthouse Park – 140 Broderick Lane, Lower Five Islands

A playship playground in a coastal park with a beautiful view of the Bay of Fundy.

Ship ahoy!

Fundy Discovery Site – 103 Tidal Bore Road, Lower Truro

A one-of-a-kind natural playground with a Bay of Fundy theme.

Herb Peppard Park – 24 Alice Street, Truro

Appealing fenced park in the East End of Truro with a children's playground, including a gazebo, multiple benches, and a greenspace.

Hilden Recreation Park – 29 William Russell Road, Hilden

Swings, a play structure and an open greenspace in a residential neighbourhood.

Kinsmen Playground – 29 Park Road, Truro

Located in Victoria Park.

3000-acre park in Downtown Truro, rich with history, and breathtaking scenic forest.

Large children's playground situated in the lower portion of Victoria Park.

Dogs on leash are permitted. Please pick up after your dog.

Washrooms available.

Nancy Avenue Park – 6 Nancy Avenue, Salmon River

Swings and a large, open greenspace in a residential neighbourhood.

Nelson Memorial Park – 153 Loop of Highway 6, Bayhead, NS

47 – acre park in a quiet, natural setting on the Northumberland Shore.

Swings and a play structure with a view of the Tatamagouche Bay.

Washrooms available.

Oakland Park – 98 Oakland Drive, Lower Onslow

Swings and a play structure in a residential neighbourhood.

Pleasant Street Playground – 449 Pleasant Street, Truro

Located beside the water tower on Pleasant Street including a children's playground and a greenspace.

Poplar Drive Park – 19 Poplar Drive, Bible Hill

Park / greenspace with playground equipment in a residential neighbourhood.

Stan “Chook” Maxwell Memorial Park Playground – 264 Prince Street, Truro

Children's playground located alongside a great greenspace which encourages recreation and the enjoyment of the outdoors.

Park is open from 1:30pm to Dusk daily.

Stewiacke Recreation Grounds – 71 Highway 2, Stewiacke

Small playground located near multiple sports fields, skate park, and off-leash dog park.

The Trailhead for the Stewiacke River Country Trail is located at this location.

Stewiacke River Park – 528 Stewiacke River Park, East Stewiacke

A shaded playground with swings and a play structure in a 66 – acre, beautiful, natural park.

Washrooms open year-round.

Jamie Sheppard Memorial Playground – 47 Golf Street, Truro

Located at the T.A.A.C. Grounds.

Children's playground with a large green space including a 0.4km (quarter-mile), five-lane running and walking track; field event facilities; football field and senior baseball field.

Victoria Square – 493 Prince Street, Truro

Greenspace in Downtown with seating available that gives one the opportunity to enjoy its surroundings.

Village Court Park – 36 Village Court, Bible Hill

Park / greenspace with playground equipment in a residential neighbourhood.



Splashpads

Bible Hill Recreation Park – 64 Guest Drive, Bible Hill

Park with large sets of playground equipment, natural playground equipment and a splashpad.

Victoria Park – 29 Park Road, Truro

Splashpad located in large children's playground situated in the lower portion of Victoria Park.

A 3000-acre park in Downtown Truro, rich with history, and breathtaking scenic forest.

Washrooms Available.

Skateparks

Tim Hortons Skatepark – 87 Young Street, Truro

Open daily from dawn until dusk.

Helmets are required and other protective gear is encouraged.

Please follow posted rules.

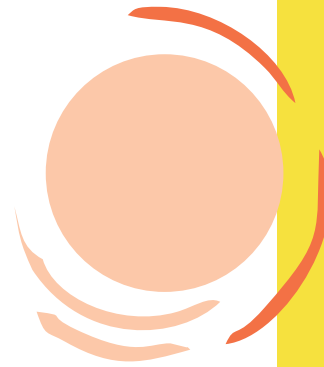
Stewiacke Skate Park – 71 Highway 2, Stewiacke Steel Skate Park.

Located at the Stewiacke Recreation Grounds.

Please follow posted rules.



Off Leash Dog Parks



Elsie's Dog Park – 107 Dieppe Avenue, Debert Debert Recreation Park.

Fenced in dog park, which offers spaces for large and small dogs to stretch their legs and make new friends.

Users are asked to please follow the rules posted at the park.

Janet Cole Memorial Dog Park – 153 Loop of Highway 6, Bayhead Nelson Memorial Park.

This fenced in dog park offers a space for small and large dogs to stretch their legs and make new friends.

Users are asked to please follow the rules posted at the park.

The Barking Lot – 71 Highway 2, Stewiacke Secure off-leash dog park.

Access is free.

Use at your own risk.

Waste bags are supplied to pick up after your dogs.

Two section; one big and one small within the park.

Truro & Bible Hill Off-Leash Dog Park – 48 Marshland Drive, Truro 2.5-acres of fenced in property including grassy play areas and water.

Two grassy play areas (one for small dogs and one for large dogs).

For safety of dogs, their owners and the public, users are asked to please adhere to rules which are posted at the park.





Fields &

Courts



Baseball Fields

Airport Ball Fields – Jennifer Drive, Bible Hill
3 Softball sized Fields.

**Debert Recreation Park – 87 & 107 Dieppe Avenue,
Debert**
Softball sized field.

Hilden Recreation Park – 29 Willian Russell Road, Hilden
Softball size field.

**North River (Leo Blair Memorial Ball Field) – 417
Highway 311, North River**
Softball size field.

**Recreation Park Fields –
64 Guest Drive, Bible Hill**
1 U 13 / Softball size field.

1 Mosquito size field.

1 Regulation size Baseball field.

Stadium Ball Fields – 25 North Street, Truro
Stadium 1 – Slow Pitch size field.

Stadium 2 – U13 size field.

Stanfield's Ball Field – 277 Queen Street, Truro
U 13 size field.

**Stewiacke Recreation Grounds – 71 Highway 2,
Stewiacke**
2 Baseball Fields.



TAAC Grounds Ballfield – 57 Golf Street, Truro
U 18 / Senior size field.

Valley Recreation Park – 14 McCallum Drive (Off Pictou Road), Valley
Softball size field.

Victoria Park Ball Field – 29 Park Road, Truro
U-11 size field.

Soccer Fields

Bible Hill Multi-Purpose Field – 64 Guest Drive, Bible Hill
This multi-purpose field can be used for soccer, rugby and lacrosse.

Debert Recreation Park – 87 & 107 Dieppe Avenue, Debert

King Street Soccer Field – 162 King Street, Truro

Stewiacke Recreation Grounds – 71 Highway 2, Stewiacke

Timbit Soccer Fields – 6 Lorne Street, Truro

Wood Street Soccer Field – 141 Wood Street, Truro

Basketball Courts

Bible Hill Recreation Park – 64 Guest Drive, Bible Hill

Dennis Park – 54 Main Street, West Stewiacke

North Street Basketball Courts – North Street, Truro

Oakland Drive Park – 98 Oakland Drive, Lower Onslow

Rocky Ridge Park – 20 Urquhart Drive, Lower Truro
An open space with a basketball court.

Limited parking available.

Stan “Chook” Maxwell Memorial Park – 264 Prince Street, Truro

Park is open from 1:30pm to Dusk daily.

Tennis Courts

North Street Tennis Courts – North Street, Truro

Truro Tennis Club

Not a Municipally operated facility.

Equipment Loan Program

Bible Hill Equipment Loan Program – Village Office: 67 Pictou Road, Bible Hill
Call 902-893-8083 to reserve.

Municipality of Colchester – Recreation Department (3rd Floor): 1 Church Street, Truro
Various pieces of equipment available.

For full listing of equipment available please visit www.colchester.ca.

Rentals available Monday to Friday 9:00am to 4:00pm.

Call ahead to reserve time slot 902-897-3185.

Stewiacke Equipment Loan Program: Stewiacke Town Office - 295 George Street, Stewiacke
Call Erin Richard at 902-639-2111 to discuss equipment loan options and availability.

Adapted Equipment Loan Program: Douglas Street Recreation Centre – 40 Douglas Street, Truro
For more information, please contact the Douglas Recreation Centre at 902-893-6078.

Rentals must be prebooked.

Adult and Child Hippocampes.

Duet Cycle.

Town of Truro Equipment Loan Program: Douglas Street Recreation Centre – 40 Douglas Street, Truro
Various pieces of equipment.

Pickup Thursday or Friday between 8:30am – 4:30pm.

Return Monday between 8:30am – 4:30pm.



Other ways to stay active

Cougar Dome – 72 North Street, Truro

www.cougardome.ca

Not a Municipally operated facility.

Facility includes the following amenities:

- Tennis
- Turf
- Track
- Jump Pit
- Golf – Driving Range

Douglas Street Recreation Centre – 40 Douglas Street, Truro

Various groups and organizations rent out the facility.

Various programs and activities are run out of the facility.

Please visit www.truro.ca for current offerings.

Rath Eastlink Community Centre – 625 Abenaki Road, Truro - www.ratheastlinkcommunitycentre.ca

Not a Municipally operated facility.

Facility includes the following amenities:

- Ice surface
- Aquatic Centre
- Walking Track
- Fitness Centre
- Rock Wall

Scotia Pool – 80 Research Drive, Bible Hill

902-893-6364

Not a Municipally Operated Facility.

Indoor Swimming Pool.

Stewiacke Community Centre for Indoor Programming – 111 Highway 2, Stewiacke

Offers fitness programs for children up to seniors.

Programs such as floor hockey, toddler play group, senior fitness, yoga, adult dodgeball and boot camp.

Option for walking around the community centre is an option upon request.

Contact info for programming or rental: Eric Richard 902-639-2111.

Truro Tennis Club – 12 Palmer Street, Truro

www.trurotennisclub.ca

Not a Municipally Operated Facility.

6 hard courts (4 lit with LED lights) and a clubhouse.

Season typically operates from May to November (dependent on weather).

