

# OUTDOOR GUIDE



GET THE

# Blazes

## OUTSIDE!

(PLEASE AND THANK YOU!)

This Guide features spaces and places located throughout Colchester County. This guide includes municipally owned, operated and maintained spaces as well as Millbrook First Nation owned, operated and maintained spaces (unless otherwise stated). We would like to acknowledge that the land on which Colchester County is located is the traditional and unceded territory of the Mi'kmaq nation.



# TABLE OF CONTENTS

|  |         |
|--|---------|
| Hiking & Walking                         | Page 4  |
| Fat Biking & Mountain Biking             | Page 11 |
| Parks & Green Spaces                     | Page 14 |
| Playgrounds                              | Page 21 |
| Splashpads                               | Page 25 |
| Skateparks                               | Page 25 |
| Off Leash Dog Parks                      | Page 26 |
| Fields & Courts                          | Page 28 |
| Equipment Loan Program                   | Page 32 |
| Other ways to Stay Active this<br>Summer | Page 34 |

# Hiking & Walking

## **Bible Hill Recreation Park - 38 Guest Drive, Bible Hill**

Park with a walking path, large sets of playground equipment as well as a natural playground.

## **Cobequid Trail - Multiple Trailheads**

- Old Barns trailhead (919 Shore Road, Old Barns)\*
- Cobequid Bay Lookoff trailhead (3471 Highway 236, Lower Truro)
- Lower Truro trailhead (4057 Highway 236, Lower Truro)
- Fundy Discovery Site trailhead (103 Tidal Bore Road, Lower Truro)\*
- Will-Kare trailhead (105 Lower Truro Road, Lower Truro)
- Truro trailhead (202 Willow Street, Truro)
- Bible Hill Recreation Park trailhead (38 Guest Drive, Bible Hill)
- Eagle Crest trailhead (39 Warren Drive, Bible Hill)
- Farnham Brook trailhead (36 Village Court, Bible Hill)

\*Bike Repair Station

18km trail network in central Colchester County. For trail map visit [colchester.ca/cobequid-trail](http://colchester.ca/cobequid-trail)

Open year round.

Walking and cycling are permitted.

Motorized vehicles are prohibited.

4

Dogs on leash are permitted. Please pick up after your dog.





Welcome to our  
**SMOKE FREE**  
spaces



**PLEASE**

follow all rules posted  
at each space and place

### **Dennis Park – 54 Main Street West, Stewiacke**

Offers many things such as a walking track, natural playground and outdoor fitness equipment.

The walking track is a 600m loop going around the outside of the park, giving one the perfect view of the entire park.

Park includes two gazebos, multiple picnic tables and benches to relax and enjoy the park.

### **Five Islands Lighthouse Park – 140 Broderick Lane, Lower Five Islands**

1km walking path meanders through this park.

Lighthouse, ship playground and picnic shelter.

Sit awhile on one of the benches and enjoy the amazing, panoramic view of the Minas Basin, home of the world's highest tides.

Washrooms available May 11 - Oct 14.

### **Hearts Haven Memorial Park - 1640 & 1680 Plains Road, Debert**

900m walking trail through mixed forest; several benches. Gardens, playground, and covered picnic tables.

### **John B. Trail - Millbrook**

Access to trailhead: turn left at 945 Willow Street. Trailhead is 250m up the road.

2km crushed stone and gravel loop which begins at the end of the Woodchip Trail.

Originally a logging road established by Community members, who are now stewards of the trail and work with the Millbrook Band Council to preserve/ maintain the trail.

**John Crawford Trail – 185 Kitchener Street, Stewiacke**

First section of the trail is a 350m crusher dust loop from the parking lot and back, with many dedicated benches along the way.

The second section of the trail is more of a nature trail focus. This section takes one through the back woods and through a wetland. This section of the trail also loops back and is a total of 1.6kms.

Total of two sections being 1.9kms.

**Kiwanis Park – 39 Juniper Street, Truro**

Walking Track around Kiwanis Park Pond.

1 lap around the pond is equal to 0.6km.

**Millbrook Powwow Grounds Walking Track – 943 Willow Street, Truro**

The Powwow grounds hosts a traditional arbor situated in the middle which is surrounded by a 400m gravel and crusher dust walking track.

Walking, cycling and wheeling are permitted on the track.

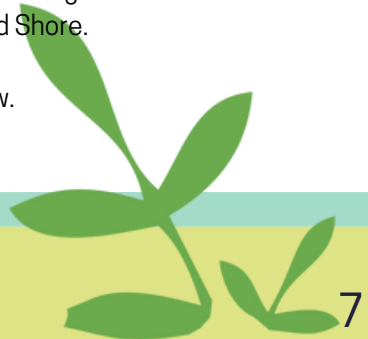
**Nelson Memorial Park Trails – 153 Loop of Highway 6, Bayhead**

Explore the walking trails in the park or the Butter Trail (rail trail), part of the Trans Canada Trail. Check [colchester.ca/nelson-memorial-park](http://colchester.ca/nelson-memorial-park) for trail status updates; trail repair continues in the park following Hurricane Fiona.

This 47-acre park is set in a quiet, natural setting beside Tatamagouche Bay on the Northumberland Shore.

Picnic shelters, playground and ocean view.

Washrooms available May 11 - Oct 14.



**River Country Trail – 71 Highway 2, Stewiacke**

First phase of the trail is 1.4km which connects Mastodon Ridge to the Stewiacke Ballfields and offers stunning views of the Stewiacke River.

Phase two of this scenic trail includes an added loop surrounding the ballfields as well as a loop back to Mastodon Ridge.

Both phases make a 2.5km trail.

**Stan “Chook” Maxwell Memorial Park – 264 Prince Street, Truro**

Walking path throughout the park's greenspace.

1 lap equals 0.3km.

Park is open from 1:30pm to Dusk daily.

**Stewiacke River Park Trail – 528 Stewiacke River Park Road, East Stewiacke**

2km trail is mostly flat along the river and through the forest.

Benches are located along the trail.

Picnic shelters and playground.

Washrooms open year-round.

**T.A.A.C. Grounds – 75 Golf Street, Truro**

0.4km (quarter-mile), 5 lane walking track.

Includes Jamie Sheppard Memorial Playground. Currently closed for T.A.A.C. revitalization and upgrades.



## **Trans Canada Trail**

As the longest recreational trail in the world, the Trans Canada Trail connects Canada from coast to coast to coast. [www.tctrail.ca](http://www.tctrail.ca)

The Trans Canada Trail in Colchester County follows scenic, rural roads and some of our best trails – the Butter Trail and Short Line Trail along the Northumberland Shore, the Gully Lake wilderness hiking trails, and the Cobequid Trail near Truro.

## **Valley Nature Trail – 96 Salmon River Road, 30 Thrush Lane (No Parking), 34 Robin Road (No Parking)**

700-m crushed gravel trail located on municipal parkland behind Valley Elementary School.

It is a loop trail through the forest, with connections to nearby residential streets.

## **Victoria Park – 29 Park Road, Truro**

75kms of trails in the upper and lower park.

For trail maps please visit [www.truro.ca](http://www.truro.ca).

Dogs on leash are permitted. Please pick up after your dog.

Expect and respect all other trail users.

Washrooms available.



## **Woodchip Trail - Millbrook**

Two entry points: End of Church Road and turning left at 945 Willow Street. Trailhead is 250m up the road.

Trailhead is adjacent to John B. Trail.

700m multi-surface trail through a forested area of spruce, hemlock and fir that allows one to see many different wildlife species along the way.

Walking is permitted on this trail.

This trail is managed and maintained by Millbrook First Nation Band Office with assistance from the Mi'kmaw Conservation Group.



# Fat Biking Mountain & Biking

## **Cobequid Trail - Multiple Trailheads**

- Old Barns trailhead (919 Shore Road, Old Barns)\*
- Cobequid Bay Lookoff trailhead (3471 Highway 236, Lower Truro)
- Lower Truro trailhead (4057 Highway 236, Lower Truro)
- Fundy Discovery Site trailhead (103 Tidal Bore Road, Lower Truro)\*
- Will-Kare trailhead (105 Lower Truro Road, Lower Truro)
- Truro trailhead (202 Willow Street, Truro)
- Bible Hill Recreation Park trailhead (38 Guest Drive, Bible Hill)
- Eagle Crest trailhead (39 Warren Drive, Bible Hill)
- Farnham Brook trailhead (36 Village Court, Bible Hill)

\*Bike Repair Station

18km walking and bicycling trail network in central Colchester County.  
For trail map visit [colchester.ca/cobequid-trail](http://colchester.ca/cobequid-trail)

Open year round.

Walking and cycling are permitted.

Motorized vehicles are prohibited.

Dogs on leash are permitted.

Please pick up after your dog.



**Nelson Memorial Park – 153 Loop of Highway 6, Bayhead**

Explore the Butter Trail (rail trail), part of the Trans Canada Trail. 47-acre park in a quiet, natural setting beside Tatamagouche Bay on the Northumberland Shore. Check [colchester.ca/nelson-memorial-park](http://colchester.ca/nelson-memorial-park) for trail status updates; trail repair continues in the park following Hurricane Fiona.

Picnic shelters, playground, and ocean view.

Washrooms available May 11 - Oct 14.

**Pat Mahaney Bike Trails – 39 Warren Drive, Bible Hill**

2.6km trail in a wooded area with loops for three skill levels (beginner, intermediate, and advanced).

**Railyard Mountain Bike Park – 627 Young Street, Truro**

Over 40km of trail.

51 trails for all skill and ability levels.

Green, Blue and Black trails based on level of difficulty.

Expect and respect all other trail users.



### **Trans Canada Trail**

As the longest recreational trail in the world, the Trans Canada Trail connects Canada from coast to coast to coast. [www.tctrail.ca](http://www.tctrail.ca)

The Trans Canada Trail in Colchester County follows scenic, rural roads and some of our best trails – the Butter Trail and Short Line Trail along the Northumberland Shore, the Gully Lake wilderness hiking trails, and the Cobequid Trail near Truro.

### **Valley Nature Trail – 96 Salmon River Road, 30 Thrush Lane (No Parking), 34 Robin Road (No Parking)**

700m crushed gravel trail located on municipal parkland behind Valley Elementary School. It is a loop trail through the forest, with connections to nearby residential streets.





**Armstrong Park – 65 Armstrong Drive, Bible Hill**

Park / greenspace in a residential neighbourhood.

**Bible Hill Recreation Park – 38 Guest Drive, Bible Hill**

Park with a large greenspace, playground equipment, natural playground, sports fields and walking trail.

**Birch Street Park – 75 Birch Street, Salmon River**

Swings and a play structure in a residential neighbourhood.

**Civic Square – 740 Prince Street, Truro**

A large, flexible open greenspace in the centre of Downtown Truro.

Equipped with seating to enjoy our beautiful downtown.

Includes outdoor musical instruments.

**Clover Drive Park – 27 Clover Drive, Bible Hill**

Park / greenspace in a residential neighbourhood.

# Green Spaces



## **Dennis Park - 54 Main Street, West Stewiacke**

Offers many things such as a walking track, natural playground, and outdoor fitness equipment.

The walking track is a 600m loop going around the outside of the park, giving one the perfect view of the entire park.

Park includes two gazebos, multiple picnic tables and benches to relax and enjoy the park.

## **Farnham Road Park - 244 Vimy Road, Bible Hill**

Park / greenspace in a residential neighbourhood.

## **Fielding Avenue Park - 22 Fielding Avenue, Bible Hill**

Park / greenspace in a residential neighbourhood.



### **Five Island Lighthouse Park – 140 Broderick Lane, Five Islands**

1km walking path meanders through this 22-acre coastal park.

Lighthouse, ship playground and picnic shelter.

Sit a while on one of the benches and enjoy the amazing, panoramic view of the Minas Basin as the highest tides in the world rise and fall.

Washrooms open 8am - 8pm daily, May 11 - Oct 14.

### **Fundy Discovery Site – 103 Tidal Bore Road, Lower Truro**

A park overlooking the Salmon River where you can observe the Tidal Bore twice daily at predicted times. Benches, picnic tables, picnic shelter. Bike repair station.

A one-of-a-kind natural playground with a Bay of Fundy theme.

Washrooms open year-round.

Visitor Information Centre on site. [www.fundydiscovery.ca](http://www.fundydiscovery.ca)

### **Halfmoon Park - 76 Eagle Drive, Valley**

A shaded park with a small playground in a residential neighbourhood.

### **Hearts Haven Memorial Park - 1640 & 1680 Plains Road, Debert**

900m walking trail through mixed forest; several benches. Gardens, playground, and covered picnic tables.

### **Herb Peppard Park – 24 Alice Street, Truro**

Appealing fenced park in the East End of Truro including a greenspace with a children's playground, a gazebo, and multiple benches.

### **Hilden Recreation Park – 29 William Russell Road, Hilden**

Swings, a play structure and an open greenspace in a residential neighbourhood.

### **Hillcrest Avenue Park – 177 Hillcrest Avenue, Bible Hill**

Park / greenspace in a residential neighbourhood.

### **Holy Well Park – 66 Main Street, Bible Hill**

Park / greenspace in a residential neighbourhood.

### **John Crawford Trail – 185 Kitchener Street, Stewiacke**

First section of the trail is a 350m crusher dust loop from the parking lot and back, with many dedicated benches along the way.

The second section of the trail is more of a nature trail focus. This section takes one through the back woods and through a wetland. This section of the trail also loops back and is a total of 1.6kms.

Total of two sections being 1.9kms.

### **Kiwanis Park – 39 Juniper Street, Truro**

Inviting park which hosts a relaxing space to watch wildlife in and around the pond.

Includes a walking path around the pond. 1 lap around the pond is equal to 0.6km.

### **Millbrook Powwow Grounds – 943 Willow Street, Truro**

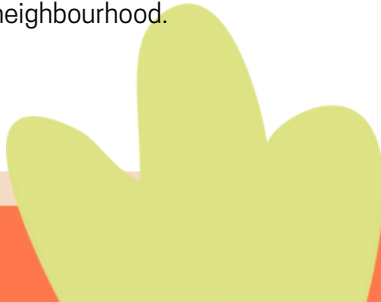
The Powwow grounds hosts a traditional arbor situated in the middle which is surrounded by a 400m walking track.

### **Mount Pleasant Boulevard Greenspace – 214 Glenwood Drive, Truro**

Large greenspace bordering Mount Pleasant Blvd. and Glenwood Dr.

### **Murdock Drive Park – 42 Murdock Drive, Bible Hill**

Park / greenspace in a residential neighbourhood.



**Nancy Avenue Park – 6 Nancy Avenue, Salmon River**

Swings and a large, open greenspace in a residential neighbourhood.

No parking.

**Nelson Memorial Park – 153 Loop of Highway 6, Bayhead**

47-acre park in a quiet, natural setting beside Tatamagouche Bay on the Northumberland Shore.

Walk along the paths through the woods or along the gravel beach and watch for wildlife.

Explore the Butter Trail (Rail Trail), part of Trans Canada Trail.

Picnic shelters, playground and ocean view.

Washrooms open 8am - 8pm daily, May 11 - Oct 14.

**Oakland Park – 96 Oakland Drive, Lower Onslow**

Swings, a play structure, a basketball court and a greenspace with a small pond in a residential neighbourhood.

**Pleasant Street Playground – 449 Pleasant Street, Truro**

Located beside the water tower on Pleasant Street including a greenspace and children's playground.

**Poplar Drive Park – 19 Poplar Drive, Bible Hill**

Park / greenspace in a residential neighbourhood.



### **River Country Trail – 71 Highway 2, Stewiacke**

First phase of the trail is 1.4km which connects Mastodon Ridge to the Stewiacke Ballfields and offers stunning views of the Stewiacke River.

Phase two of this scenic trail includes an added loop surrounding the ballfields as well as a loop back to Mastodon Ridge.

Both phases make a 2.5km trail.

Small playground located near trailhead.

### **Riverfront Park – 10 Bayview Street, Truro**

Situated along the Salmon River beside the bridge linking Truro to Bible Hill.

Attractive park with lights, a gazebo, picnic tables and a green space.

### **Rocky Ridge Park – 20 Urquhart Drive, Truro Heights**

An open space with a basketball court in a residential neighbourhood.

Limited parking available.

### **Scenic Drive Park – 23 Maple Boulevard, Bible Hill**

Park / greenspace in a residential neighbourhood.

### **Stan “Chook” Maxwell Memorial Park – 264 Prince Street, Truro**

Beautiful park / greenspace and children's playground which encourages recreation and the enjoyment of the outdoors.

Park is open from 1:30pm to Dusk daily.

**Stewiacke River Park – 528 Stewiacke River Park Road, East Stewiacke**

Enjoy this 66-acre, natural forested park with mature pine, hemlock and spruce trees. Walk 2km of trail along the river and through the forest.

Benches are located along the trail. Picnic shelters and playground.

Washrooms open year-round.

**T.A.A.C. Grounds – 75 Golf Street, Truro**

Large green space including a 0.4km (quarter-mile), five-lane running and walking track; field event facilities; football field, senior baseball field and Jamie Sheppard Memorial Playground. Some features are currently closed for T.A.A.C. revitalization and upgrades.

**Teakwood Drive Park – 27 Teakwood Drive, Bible Hill**

Park / greenspace in a residential neighbourhood.

**Victoria Park – 29 Park Road, Truro**

3000-acre park in Downtown Truro, rich with history, and breathtaking scenic forestry.

Many trails for all abilities. For trail maps please visit [www.truro.ca](http://www.truro.ca).

Dogs on leash are permitted. Please pick up after your dog.

Washrooms available.

**Victoria Square – 493 Prince Street, Truro**

Greenspace in Downtown with seating available that gives one the opportunity to enjoy its surroundings.

**Village Court Park – 36 Village Court, Bible Hill**

Park / greenspace in a residential neighbourhood.



# Playgrounds

## **Anita Crescent Playground – 57 Anita Crescent, Truro Heights**

A play structure and swings in a residential neighbourhood.

## **Bible Hill Recreation Park – 38 Guest Drive, Bible Hill**

Park with large sets of playground equipment including natural playground equipment.

## **Birch Street Park – 75 Birch Street, Salmon River**

Swings and a play structure in a residential neighbourhood.

## **Debert Playground – 80 Dieppe Avenue, Debert**

A playground with swings and a play structure in a residential neighbourhood.

## **Dennis Park Playground – 54 Main Street, West Stewiacke**

Offers many things such as a natural playground, walking track, and outdoor fitness equipment.

Park also includes two gazebos, multiple picnic tables and benches to relax and enjoy the park.



### **Five Island Lighthouse Park – 140 Broderick Lane, Lower Five Islands**

A playship playground in a coastal park with a beautiful view of the Bay of Fundy. Ship ahoy!

Washrooms open 8am - 8pm daily, May 11 - Oct 14.

### **Fundy Discovery Site – 103 Tidal Bore Road, Lower Truro** **[www.FundyDiscovery.ca](http://www.FundyDiscovery.ca)**

A park overlooking the Salmon River where you can observe the Tidal Bore twice daily at predicted times. Benches, picnic tables, picnic shelter. Bike repair station.

### **Halfmoon Park - 76 Eagle Drive, Valley**

A shaded playground with swings and a play structure in a residential neighbourhood.

### **Hearts Haven Memorial Park - 1640 & 1680 Plains Road, Debert**

A fun new playground with swings, a sand kitchen and a timber climbing structure. The park features covered picnic tables, 900m walking trail through mixed forest, several benches, flower gardens.

### **Herb Peppard Park – 24 Alice Street, Truro**

Appealing fenced park in the East End of Truro with a children's playground, including a gazebo, multiple benches, and a greenspace.

### **Hilden Recreation Park – 29 William Russell Road, Hilden**

Swings, a play structure and an open greenspace in a residential neighbourhood.

### **Kinsmen Playground – 29 Park Road, Truro**

Located in Victoria Park. 3000-acre park in Downtown Truro, rich with history, and breathtaking scenic forest.

Large children's playground situated in the lower portion of Victoria Park.

Washrooms available.

### **Nancy Avenue Park – 6 Nancy Avenue, Salmon River**

**Nelson Memorial Park – 153 Loop of Highway 6, Bayhead, NS**

47-acre park in a quiet, natural setting on the Northumberland Shore. Forested areas of the park are closed due to damage from Hurricane Fiona.

Swings, picnic shelters and a play structure with a view of the Tatamagouche Bay.

Washrooms open 8am - 8pm daily, May 11 Oct 14.

**Oakland Park – 98 Oakland Drive, Lower Onslow**

Swings and a play structure in a residential neighbourhood.

**Pleasant Street Playground – 449 Pleasant Street, Truro**

Located beside the water tower on Pleasant Street including a children's playground and a greenspace.

**Poplar Drive Park – 19 Poplar Drive, Bible Hill**

Park / greenspace with playground equipment in a residential neighbourhood.

**Stan “Chook” Maxwell Memorial Park Playground – 264 Prince Street, Truro**

Children's playground located alongside a great greenspace which encourages recreation and the enjoyment of the outdoors.

Park is open from 1:30pm to Dusk daily.

**Stewiacke Recreation Grounds – 71 Highway 2, Stewiacke**

Small playground located near multiple sports fields, skate park, and off-leash dog park.

The Trailhead for the Stewiacke River Country Trail is located at this location.

**Stewiacke River Park – 528 Stewiacke River Park, East Stewiacke**

A shaded playground with swings and a play structure in a 66 – acre, beautiful, natural park.

Washrooms open year-round.

**Jamie Shephard Memorial Playground – 47 Golf Street, Truro**

Located at the T.A.A.C. Grounds. **Currently closed for T.A.A.C. revitalization and upgrades.**

Children's playground with a large green space including a 0.4km (quarter-mile), five-lane running and walking track; field event facilities; football field and senior baseball field.

**Village Court Park – 36 Village Court, Bible Hill**

Park / greenspace with playground equipment in a residential neighbourhood.



# Splashpads

## **Bible Hill Recreation Park - 38 Guest Drive, Bible Hill**

Park with large sets of playground equipment, natural playground equipment and a splashpad.

## **Victoria Park - 29 Park Road, Truro**

Splashpad located in large children's playground situated in the lower portion of Victoria Park.

A 3000-acre park in Downtown Truro, rich with history, and breathtaking scenic forest.

Washrooms Available.

# Skateparks

## **Tim Hortons Skatepark - 87 Young Street, Truro**

Open daily from dawn until dusk.

Helmets are required and other protective gear is encouraged.

Please follow posted rules.

## **Stewiacke Skate Park - 71 Highway 2, Stewiacke**

Steel Skate Park.

Located at the Stewiacke Recreation Grounds.

Please follow posted rules.



# Off Leash Dog Parks

## **Elsie's Dog Park - 107 Dieppe Avenue, Debert Debert Recreation Park.**

Fenced in dog park, which offers spaces for large and small dogs to stretch their legs and make new friends.

Users are asked to please follow the rules posted at the park.

## **Janet Cole Memorial Dog Park - 153 Loop of Highway 6, Bayhead Nelson Memorial Park.**

This fenced in dog park offers grassy spaces for small and large dogs to stretch their legs and make new friends.

Users are asked to please follow the rules posted at the park.



### **The Barking Lot - 71 Highway 2, Stewiacke**

Secure off-leash dog park.

Access is free.

Use at your own risk.

Waste bags are supplied to pick up after your dogs.

Two section; one big and one small within the park.

### **Truro & Bible Hill Off-Leash Dog Park - 48 Marshland Drive, Truro**

2.5acres of fenced in property including grassy play areas and water.

Two grassy play areas (one for small dogs and one for large dogs).

For safety of dogs, their owners and the public, users are asked to please adhere to rules which are posted at the park.





# Fields &

# Baseball Fields

**Airport Ball Fields – Jennifer Drive, Bible Hill**

3 softball size fields.

**Debert Recreation Park – 87 & 107 Dieppe Avenue, Debert**

Softball size field.

**Hilden Recreation Park – 29 William Russell Road, Hilden**

Softball size field with grass infield.

**North River (Leo Blair Memorial Ball Field) – 417 Highway 311,  
North River**

2 softball size fields.

# Courts



## **Bible Hill Recreation Park Fields – 38 Guest Drive, Bible Hill**

1 U 13 / Softball size field.

1 Mosquito size field.

1 Regulation size Baseball field.

## **Stadium Ball Fields – 25 North Street, Truro**

Stadium 1 – Slow Pitch size field.

Stadium 2 – U13 size field.

## **Stanfield's Ball Field – 277 Queen Street, Truro**

U 13 size field.

## **Stewiacke Recreation Grounds – 71 Highway 2, Stewiacke**

2 Baseball fields.

## **TAAC Grounds Ballfield – 57 Golf Street, Truro**

U 18 / Senior size field.

## **Valley Recreation Park – 14 McCallum Drive (Off Pictou Road), Valley**

Softball size field.

## **Victoria Park Ball Field – 29 Park Road, Truro**

U-11 size field.

# Soccer Fields

**Bible Hill Multi-Purpose Field - 38 Guest Drive, Bible Hill**

This multi-purpose field can be used for soccer, rugby and lacrosse.

**Debert Recreation Park - 87 & 107 Dieppe Avenue, Debert**

**King Street Soccer Field - 162 King Street, Truro**

**Stewiacke Recreation Grounds - 71 Highway 2, Stewiacke**

**Timbit Soccer Fields - 6 Lorne Street, Truro**

**Wood Street Soccer Field - 141 Wood Street, Truro**

# Tennis Courts

**Debert Tennis Court - 37 Acadia Avenue, Debert**

**North Street Tennis Courts - North Street, Truro**

**Truro Tennis Club - 12 Palmer Street, Truro**

**[www.trurotennisclub.ca](http://www.trurotennisclub.ca)**

Not a Municipally Operated Facility.

6 hard courts (4 lit with LED lights) and a clubhouse. Season typically operates from May to November (dependent on weather).

# Basketball Courts

**Bible Hill Recreation Park - 38 Guest Drive, Bible Hill**

**Debert Basketball Court - 37 Acadia Avenue, Debert**

**Dennis Park- 54 Main Street, West Stewiacke**

**North Street Basketball Courts - North Street, Truro**

**Oakland Drive Park - 98 Oakland Drive, Lower Onslow**

**Rocky Ridge Park - 20 Urquhart Drive, Lower Truro**

Limited parking available.

**Stan “Chook” Maxwell Memorial Park - 264 Prince Street, Truro**

Park is open from 1:30pm to Dusk daily.



# Equipment Loan Program

**Bible Hill Equipment Loan Program - Village Office: 67 Pictou Road, Bible Hill**

Call 902-893-8083 to reserve.

**Colchester Recreation Equipment Loan Program - Municipal Office (3rd Floor): 1 Church Street, Truro**

Various pieces of equipment available.

For full listing of equipment available please visit [colchester.ca/equipment-loan](http://colchester.ca/equipment-loan)

Rentals available Monday to Friday 9:00am to 4:00pm.

Call ahead to reserve time slot 902-897-3185.

**Stewiacke Equipment Loan Program: Stewiacke Town Office - 295 George Street, Stewiacke**

Call Erin Richard at 902-639-2111 to discuss equipment loan options and availability.



**Adapted Equipment Loan Program: Douglas Street Recreation Centre – 40 Douglas Street, Truro**

For more information, please contact the Douglas Recreation Centre at 902-893-6078.

Rentals must be prebooked.

Adult and Child Hippocampes.

Duet Cycle.

**Town of Truro Equipment Loan Program: Douglas Street Recreation Centre – 40 Douglas Street, Truro**

Various pieces of equipment.

Pickup Thursday or Friday between 8:30am – 4:30pm.

Return Monday between 8:30am – 4:30pm.



# Other ways

## **Cobequid Lawn Bowls Club - 40 Douglas Street, Truro -**

**[www.cobequidlawnbowls.com](http://www.cobequidlawnbowls.com)**

Not a Municipally operated facility.

Open May - October

All equipment is provided.

New players are welcome.

Suitable for all ages and abilities.

Try it for free, 3 times.

## **Cougar Dome - 72 North Street, Truro - [www.cougardome.ca](http://www.cougardome.ca)**

Not a Municipally operated facility.

Facility includes the following amenities:

- Tennis
- Turf
- Track
- Jump Pit
- Golf - Driving Range

## **Douglas Street Recreation Centre - 40 Douglas Street, Truro**

Various groups and organizations rent out the facility.

Various programs and activities are run out of the facility.

Please visit [www.truro.ca](http://www.truro.ca) for current offerings.

## **Rath Eastlink Community Centre - 625 Abenaki Road, Truro -**

**[www.ratheastlinkcommunitycentre.ca](http://www.ratheastlinkcommunitycentre.ca)**

Not a Municipally operated facility.

Facility includes the following amenities:

- Ice surface
- Aquatic Centre
- Walking Track
- Fitness Centre
- Rock Wall



# to stay active

**Scotia Pool – 80 Research Drive, Bible Hill**  
**902-893-6364**

Not a Municipally Operated Facility.

Indoor Swimming Pool.

**Stewiacke Community Centre for Indoor Programming – 111 Highway 2, Stewiacke**

Offers fitness programs for children up to seniors.

Programs such as floor hockey, toddler play group, senior fitness, yoga, adult dodgeball and boot camp.

Walking around the community centre is an option upon request.

Contact info for programming or rental: Eric Richard 902-639-2111.

**Truro Tennis Club – 12 Palmer Street, Truro**  
**[www.trurotennisclub.ca](http://www.trurotennisclub.ca)**

Not a Municipally Operated Facility.

6 hard courts (4 lit with LED lights) and a clubhouse.

Season typically operates from May to November (dependent on weather).

